



Bonhams

**20th Century
Decorative Arts**

Monday December 16, 2013
New York

20th Century Decorative Arts

Monday December 16, 2013 at 1pm
New York

Bonhams

580 Madison Avenue
New York, New York 10022
bonhams.com

Preview

Friday December 13, 10am to 5pm
Saturday December 14, 12pm to 5pm
Sunday December 15, 12pm to 5pm
Monday December 16, 10am to 1pm

Bids

+1 (212) 644 9001
+1 (212) 644 9009 fax

To bid via the internet please
visit www.bonhams.com

Sale Number: 21039

Lots 1000 - 1384

Catalog: \$35

Inquiries

Frank Maraschiello, Director
+1 (212) 644 9059
+1 (212) 644 9007 fax
frank.maraschiello@bonhams.com

Beth Vilinsky, Senior Specialist
+1 (212) 710 1306
+1 (212) 644 9007 fax
beth.vilinsky@bonhams.com

Lindsay Kasin, Business Manager
+1 (212) 710 1309
+1 (212) 644 9007 fax
lindsay.kasin@bonhams.com

Los Angeles

Dan Tolson, Director
+1 (323) 436 5405
+1 (323) 850 5843 fax
daniel.tolson@bonhams.com

Angela Past, Senior Specialist
+1 (323) 436 5422
+1 (323) 850 5843 fax
angela.past@bonhams.com

Automated Results Service
+1 (800) 223 2854

Online bidding will be available
for this auction. For further
information please visit:
www.bonhams.com/21039

Please see pages 2 to 6
for bidder information including
Conditions of Sale, after-sale
collection and shipment.

Illustrations

Front cover: Lot 1377
Inside front cover: Lot 1205
Inside back cover: Lot 1043
Back cover: Lot 1014



Arts and Crafts and Tiffany Studios

1000

A George Walton glazed oak Holland cabinet

produced by J.S. Henry, circa 1900

together with companion book *George Walton: Designer and Architect*, by Karen Moon, published by White Cockade Publishing, Oxford, 1993 height 59in (150cm); width 48in (122cm); depth 19in (48.2cm). Two pieces. \$18,000 - 25,000

Provenance:

Michael FitzSimmons Decorative Arts, Chicago

Literature:

Charlotte Gere and Michael Whiteway, *Nineteenth Century Design*, Harry N. Abrams, New York, 1994, p. 219, pl. 274 for an illustration of this cabinet.

With a background in painting and a degree from The Glasgow School of Art, Henry Walton (1867-1933) was a leading architect and designer of the Glasgow Style. He served as the principal contractor for one of Miss Cranston's Glasgow tea rooms, and the success and acclaim that followed enabled him to establish his own decorating company in 1886. Early in his career he ordered furniture for his interiors, but by the mid-1890s he was designing his own. A great admirer of English Arts and Crafts, Walton moved his business to London in the late 1890s, and his furniture designs incorporated the rectilinear forms of the work of William Morris and the clean, slender lines of the creations of C.F.A. Voysey. The "Holland" cabinet was given its name as it was designed for Walton's personal Holland Street residence. The cabinet on offer is believed to be the particular cabinet featured in period photographs of the Waltons' Holland Street drawing room. Alternatively, it is an identical model.



1001

1001
An Archibald Knox pewter tray
circa 1900
impressed *MADE IN ENGLAND ENGLISH
PEWTER/0376/SOLKBFS*
length 19 1/4in (49cm); depth 12 1/4in (31cm)
\$2,000 - 3,000

Provenance:
Christie's London, South Kensington, *Liberty &
Co Including the Collection of Keith Carpenter*,
September 24, 2003, sale 9784, lot 138.

Literature:
Mervyn Levy, *Liberty Style: The Classic Years,
1898-1910*, New York, Rizzoli International
Publications Inc. 1986, p. 47 for another
example photographed with matching tea set.

1002
An Archibald Knox for Liberty & Co. Tudric
enameled pewter cake basket/tray
circa 1905
impressed *RD449052 0357 TUDRIC*
height 3 1/2in (9cm); width 12 1/8in (30.8cm);
depth 8 3/4in (22.8cm)
\$1,000 - 1,500

Provenance:
Christie's London, South Kensington, *Liberty &
Co Including the Collection of Keith Carpenter*,
September 24, 2003, sale 9784, lot 59.

1003
An Archibald Knox for Liberty & Co.
enameled pewter clock
circa 1902-1905
with easel back, stamped *LIBERTY & CO 0482/
ENGLISH PEWTER*
height 4 1/8in (10.5cm)
\$2,000 - 3,000

Literature:
A.J. Tilbrook and Gordon House, *The Designs of
Archibald Knox for Liberty & Co.*, 1976, p. 106,
fig. no. 87 for an illustration of the model.



1002



1003



1004

1004

An Archibald Knox for Liberty & Co. Tudric pewter and abalone clock

circa 1902-1905

stamped TUDRIC 095

height 13 3/8in (24cm); width 7 1/4in (18.5cm); depth 4in (10.2cm)

\$45,000 - 60,000

Provenance:

Christie's London, South Kensington, *Liberty & Co Including the Collection of Keith Carpenter*,
September 24, 2003, sale 9784, lot 155

Literature:

A.J. Tilbrook and Gordon House, *The Designs of Archibald Knox for Liberty & Co.*, 1976, p. 113, fig
no. 95 for an illustration of the model.

Stephen A. Martin, ed. *Archibald Knox*, 1995, p. 88.

"Great Clocks by Archibald Knox", Stephen A. Martin, *Style 1900*, Volume 13, Number 3 Spring/
Summer 2000, pp. 24-37, illustrated on the front cover of the issue.



1005



1006



1007



1008



1009

1005
 A pair of Archibald Knox for Liberty & Co. pewter candlesticks
 circa 1900
 impressed *MADE IN ENGLAND ENGLISH PEWTER 022 P P*
 height 5 1/8in (13cm)
 \$800 - 1,200

1006
 An Archibald Knox for Liberty & Co. Tudric pewter tea caddy/
 biscuit barrel
 circa 1900
 impressed 0193
 height 4 1/8in (10.5cm); diameter 4in (10.2cm). Together with a Liberty
 and Company Silver Tea Caddy, impressed L & C and silver marked
 height 5 3/4in (14.5cm); width 4in (10.2cm). Two pieces.
 \$1,000 - 1,500

1007
 An English red cameo glass vase with Floral bouquet
 circa 1890
 height 10in (25.4cm)
 \$1,500 - 2,000

1008
 An English red cameo glass vase with Butterfly
 circa 1890
 painted 445 and CAMEO within an oval
 height 8 1/4in (21cm)
 \$1,500 - 2,000



1010

1009

A tall Moorcroft glazed earthenware Flambé Orchids vase

circa 1945

inscribed in blue twice *W. Moorcroft*, and impressed *MADE IN ENGLAND*
and *POTTER TO RM THE QUEEN*

height 14 3/4in (37.7cm)

\$1,000 - 1,500

Property from the Estate of Richard Maltz

1010

A Fulper glazed ceramic and leaded glass table lamp

first quarter 20th century

base marked with the Vasekraft circular logo, *FULPER* within a rectangle
and *PATENTS PENDING IN UNITED STATES AND CANADA ENGLAND.*

FRANCE AND GERMANY, shade numbered 28/41 with additional
indistinct characters

height 18 3/4in (47.8cm); diameter 18in (45.8cm)

\$6,000 - 9,000



1011



1012

Property of various owners

1011

A Gustav Stickley single door sixteen pane oak bookcase

model no. 715, circa 1904

height 56 1/4in (143cm); width 34 7/8in (88.8cm); depth 13in (33cm)

\$3,000 - 5,000

Provenance:

Jordan Volpe Gallery, New York City, 1979

1012

A Gustav Stickley spindle, flat arm oak Morris chair

model no. 367, circa 1907

height 37 1/2in (95.3cm); width 27 1/2in (68.6cm); depth 34in (86.4cm)

\$3,000 - 5,000

Provenance:

Jordan Volpe Gallery, New York City, 1980

1013

A Gustav Stickley oak hall seat/settle with chest

model no. 182, circa 1902

height 37in (94cm); width 48 1/2in (123.3cm); depth 25in (63.5cm)

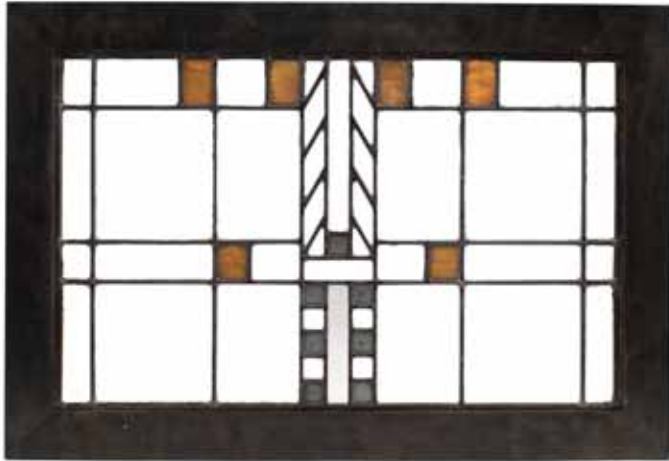
\$3,000 - 5,000

Provenance:

Jordan Volpe Gallery, New York, 1979



1013



1014

1014

A Frank Lloyd Wright leaded glass and wood exterior window designed for the Meyer May House, Grand Rapids, Michigan, 1908 overall height 23in (58.4cm); length 33 1/2 in (85cm); window height 17 1/2in (44.4cm); length 28in (71cm)
\$6,000 - 8,000

Provenance:

Mr. Meyer S. May, Grand Rapids, Michigan
Steelcase Foundation, Michigan

Literature:

Julie L. Sloan, *Light Screens: The Leaded Glass of Frank Lloyd Wright*, Rizzoli International, 2001, p. 92 for a period exterior photograph and plate 98 for an illustration of the window.

Exhibited:

Light Screens: The Leaded Glass of Frank Lloyd Wright, American Craft Museum, New York, New York, May 10-September 2, 2001; Grand Rapids Art Museum, Grand Rapids, Michigan, October 12, 2001-January 6, 2003; Allentown Art Museum, Allentown, Pennsylvania, February 21-April 28, 2002; High Museum of Art, Atlanta, Georgia, June 8-September 1, 2002; Orange County Art Museum, Newport Beach, California, October 5, 2002-January 5, 2003; Renwick Gallery, Smithsonian Institution, Washington, D.C., March 14-July 20, 2003.

1015

An L & J. G. Stickley oak and etched copper tall case clock circa 1912 bears THE WORK OF L.&J.G.STICKLEY decal height 80 1/4in (203.8cm); width 25 1/2in (64cm); depth 14 3/4in (37.5cm)
\$20,000 - 30,000

Provenance:

Jordan Volpe Gallery, New York, 1979

Literature:

Barbara Mayer, *In the Arts and Crafts Style*, 1992, front cover for an illustration of the model.



1015



EB 1793

Bonhams
580 Madison Avenue
New York, New York 10022

+1 212 644 9001
+1 212 644 9009 (fax)