

Heritage Signature® Auction #5021

Important 20th Century Design

June 4, 2009 | Dallas, Texas

PRELIMINARY LOT VIEWING

Ukrainian Institute (Fletcher-Sinclair Mansion)

2 East 79th Street, New York

Thursday, May 21 • 9:00 AM – 7:00 PM ET

Friday, May 22 • 9:00 AM – 5:00 PM ET

LOT VIEWING

Heritage Auction Galleries Design District Annex

1518 Slocum St. • Dallas, Texas 75207

Saturday, May 30 – Wednesday, June 3

10:00 AM CT – 5:00 PM CT (closed Sunday)

View Online at HA.com/Modern

RECEPTION

Wednesday, June 3, 6:00 PM

LIVE FLOOR BIDDING

Bid in person during the floor sessions.

LIVE TELEPHONE BIDDING

(floor sessions only)

Phone bidding must be arranged on or before Wednesday, June 3, 2009, by 12:00 PM CT.

Client Service: 866-835-3243.

HERITAGE Live!™ BIDDING

Bid live from your location, anywhere in the world, during the Auction using our HERITAGE Live!™ program at HA.com/Live

INTERNET BIDDING

Internet absentee bidding ends at 10:00 PM CT the evening before each session. HA.com/FineArt

FAX BIDDING

Fax bids must be received on or before Wednesday, June 3, 2009, by 12:00 PM CT. Fax: 214-409-1425

MAIL BIDDING

Mail bids must be received on or before Wednesday, June 3, 2009.

Please see "Choose Your Bidding Method" in the back of this catalog for specific details about each of these bidding methods.

LIVE AUCTION

SIGNATURE® FLOOR SESSIONS 1-3

(Floor, Telephone, HERITAGE Live!™ Internet, Fax, and Mail)

Heritage Auction Galleries Design District Annex

1518 Slocum St. • Dallas, Texas 75207

SESSION 1

Thursday, June 4, 2009 • 10:00 AM CT • Lots 73001–73102

SESSION 2

Thursday, June 4, 2009 • 2:00 PM CT • Lots 73103–73266

NON FLOOR/NON PHONE BIDDING SESSION 3

(HERITAGE Live!™ Internet, Fax, and Mail only)

SESSION 3

Thursday, June 4, 2009 • 5:00 PM CT • Lots 73267–73338

AUCTION RESULTS

Immediately available at HA.com/FineArt

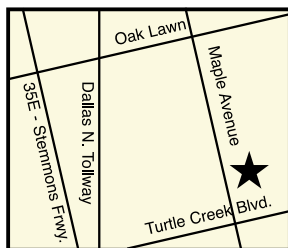
LOT SETTLEMENT AND PICK-UP

Available immediately following each floor session or weekdays 9:00 AM – 5:00 PM CT by appointment only.

Lots are sold at an approximate rate of 75 lots per hour, but it is not uncommon to sell 60 lots or 100 lots in any given hour.

This auction is subject to a 19.5% Buyer's Premium.

THIS AUCTION IS PRESENTED AND CATALOGED BY HERITAGE AUCTIONS, INC.



Heritage World Headquarters

HERITAGE HA.com

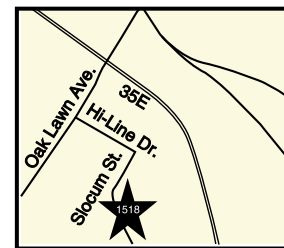
Auction Galleries

Home Office • 3500 Maple Avenue, 17th Floor • Dallas, Texas 75219

Design District Annex • 1518 Slocum Street • Dallas, Texas 75207

214.528.3500 | 800.872.6467 | 214.409.1425 (fax)

Direct Client Service Line: Toll Free 1.866.835.3243 • Email: Bid@HA.com



Heritage Design District Annex

TX Auctioneer licenses: Samuel Foose 11727; Robert Korver 13754; Scott Peterson 13256; Bob Merrill 13408; Mike Sadler 16129; Andrea Voss 16406; Jacob Walker 16413; Charlie Mead 16418; Eric Thomas 16421; Shaunda Fry 16448; Marsha Dixey 16493; Tim Rigdon 16519; Michael Jester 16578; Cori Moore 16582; Dennis Nowicki 16584; Stewart Huckaby 16590; Wayne Shoemaker 16600; Chris Dykstra 16601. Associate Leo Frese 7985 under sponsorship of Andrea Voss 16406.

SESSION 2





73103

T.J. WHEATLEY

A Matte-Glazed Pottery Planter Vase, circa 1910

Marks: WP, 683, Wheatley paper label

11-1/2 inches (29.2 cm) high

Estimate: \$2,000-\$3,000

Starting Bid: \$1,500

73104

A PAIR OF ARTS AND CRAFTS WROUGHT IRON
ANDIRONS

Circa Early 20th Century

29 x 10 x 25 inches (73.7 x 25.4 x 63.5 cm) each

Estimate: \$1,000-\$1,500

Starting Bid: \$800





73105

HARVEY ELLIS FOR GUSTAV STICKLEY

An Oak Chest of Drawers, model no. 913, circa 1900

Marked in drawer: *Gustav Stickley red decal*

50-1/2 x 36 x 20 inches (128.3 x 91.4 x 50.8 cm)

Estimate: \$8,000-\$12,000

Starting Bid: \$6,000



73106

WILLIAM DAY GATES FOR TECO

A Glazed Pottery Four-Handled Vase, circa 1902

Marks: teco (twice)

7-1/2 inches (19.1 cm) high

Estimate: \$3,000-\$5,000

Starting Bid: \$2,500

73107

WILLIAM DAY GATES FOR TECO

A Matte-Glazed Ceramic Two-Handled Vase,
circa 1902

Marks: teco (twice)

8 inches (20.3 cm) high

Estimate: \$2,000-\$3,000

Starting Bid: \$1,800



73108

GEORGE WASHINGTON MAHER

An Oak and Leather-Upholstered "Rockledge" Side Chair, circa 1911-1912
40-3/4 x 18-1/2 x 20-1/4 inches (103.5 x 47.0 x 51.4 cm)

PROVENANCE:

Ernest L. and Grace King residence, Homer, Minnesota.

In 1912, George Washington Maher designed *Rockledge*, a summer residence near Homer, Minnesota, for E.L. King. Sited just beneath a cliff along the Mississippi River, *Rockledge* is considered the finest residence of Maher's career and a perfect example of his motif-rhythm theory of architectural design.

Information and other examples from the Maher / *Rockledge* commission can be found in the following books and publications: W. Kaplan, ed., *The Art that is Life: The Arts and Crafts Movement in America, 1875-1920*, Boston, 1987, pp. 396-400; J. Kardon, *The Ideal Home: The History of Twentieth Century American Craft, 1900-1920*, New York, 1993, cover illus. and p. 205; *Geo. W. Maher Quarterly*, October-December 1992, pp. 1, 16, and 17; and *Arts*, December 1995, The Minneapolis Institute of Arts, cover and back cover.

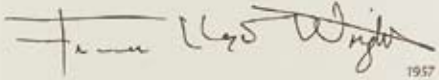
Examples of artworks from *Rockledge* are in the permanent collections of the Metropolitan Museum of Art, Cooper-Hewitt National Design Museum, the Brooklyn Museum of Art, the Minnesota Historical Society, the Newark Museum, the Baltimore Museum of Art, the Minneapolis Institute of Arts, the Milwaukee Art Museum, the Wolfsonian, Miami Beach, the Dallas Museum of Art, the Houston Museum of Fine Arts, and the St. Louis Art Museum.

Estimate: \$20,000-\$30,000

Starting Bid: \$16,000

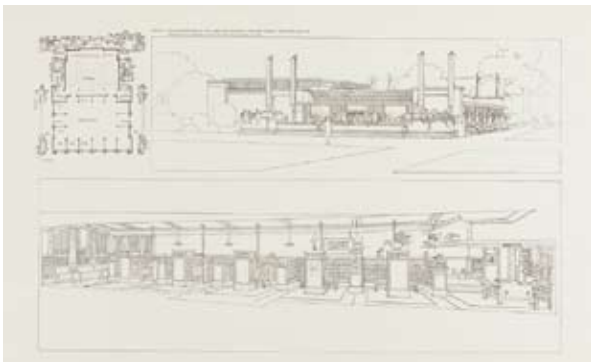
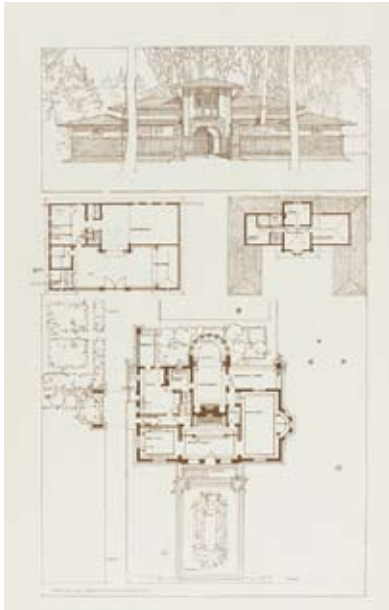





 1957

**It is from that "one whole copy only" that this monumental work has been produced, in accordance with Frank Lloyd Wright's wishes as he discussed the project with the publisher in 1958 at Taliesin. The American edition is limited to twenty-six hundred copies, of which twenty-five hundred copies are for sale.*

This Copy is Number 364 5



73109

FRANK LLOYD WRIGHT

"Wasmuth" Portfolio of Buildings, Plans, and Designs, Horizon Press, New York, 1963 reprint
 25-1/4 x 15-3/4 inches (64.1 x 40.0 cm) each sheet
 Portfolio includes introductory booklet in original wrapper, 100 plates loose as issued, together in original half cloth portfolio with ties

Estimate: \$3,000-\$5,000

Starting Bid: \$2,000



73110

FRANK LLOYD WRIGHT

An Oak Reclining Armchair, designed for the William E. Martin House, Oak Park, Illinois, circa 1902
28 x 29 x 33 inches (71.1 x 73.7 x 83.8 cm)

PROVENANCE:

Barbra Streisand Collection.

Frank Lloyd Wright created this chair for the house he designed in 1902 in Oak Park, Illinois, for William E. Martin, co-owner with his brother, Darwin, of the E-Z Polish Company. The intriguing, successful design of Martin's house brought Wright eight other major commissions, including one for the Martin brothers' own E-Z Polish factory. Darwin Martin was employed by the Larkin Company in Buffalo, New York, and he convinced the company to have Wright design their new administration building. Darwin also commissioned Wright to build his home with a gardener's cottage in Buffalo, New York, and his summer residence in Derby, New York. In Buffalo, Wright additionally completed homes for George Barton, Darwin's brother-in-law, and for W.R. Heath and for Alexander Davidson, both Larkin Company employees. It was in the Chicago suburb of Oak Park, where William Martin lived and used this chair, that Wright developed and perfected his signature "Prairie style," the basis of 20th-century residential design in the United States. Wright's Prairie style featured structures with low-lying exteriors and open, light-filled interiors, where the manmade was meant to resonate with the surrounding natural environment. Understanding Wright's philosophy concerning the relationship between architecture and interior design is especially essential for appreciating this chair. According to Wright, a home's materials, windows, lighting, furniture, and exterior setting, as much as its architectural framework, equally contributed to the overall design concept and the ultimate success of the commission. In fact, Wright believed that the home, in its entirety, had the power to "shape" its residents.

Estimate: \$75,000-\$90,000

Starting Bid: \$50,000